

MONUMENT RECORD

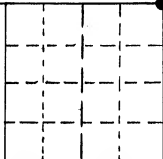
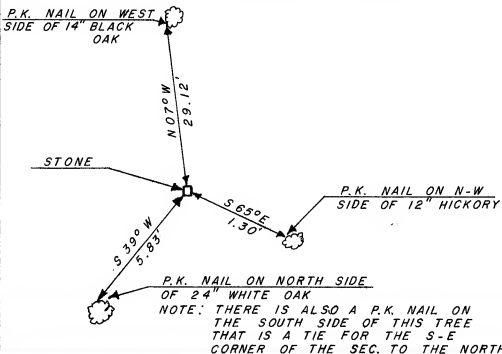
STATE OF INDIANA - COUNTY OF MONROE

SECTION 5, TOWNSHIP 8 NORTH, RANGE 1 EAST

MONUMENT DESCRIPTION & REMARKS

FOUND SANDSTONE STONE 0.65' x 0.40' x 0.30' HIGH WITH A FAINT
(X) ON TOP SOLID IN GROUND STONE IS CUT SQUARE.

RECOVERY TIE DRAWING



(●) AT CORNER



NOT TO SCALE

STATE OF INDIANA

COUNTY OF MONROE

I, EDMUND O. FARKAS HEREBY CERTIFY THAT THIS DOCUMENT WAS PREPARED UNDER MY DIRECTION IN ACCORDANCE WITH THE PROVISIONS OF SECTION 17-3-64-4 - 17-3-64-8 OF THE INDIANA CODE, BEING ACTS OF 1965, CHAPTER 319; AND THE ABOVE DATA IS GIVEN UNDER MY HAND AND SEAL THIS 5 TH DAY OF OCTOBER, 19 83 A.D.

SPACE RESERVED FOR RECORDING OFFICER.

INDIANA REGISTERED LAND SURVEYOR NO. _____

OR _____

UNITED STATES GOVERNMENT AGENCY

TOWNSHIP: SALT CREEK

CORNER I.D.

TITLE

I - 1

MONUMENT RECORD
State of Indiana - County of Monroe

Section: 5

Township: 8 North

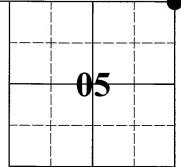
Range: 1 East

Corner ID: SaCr I-01

Monument Description & Remarks: Sandstone with "X", height 0.40ft, length 0.65ft, width 0.35ft, Survey Sign 5ft above ground at pt. B

References On File: Legal Survey Book 2, page 458 (1861), on file in Surveyor Office

RECOVERY TIE DRAWING
Field Book 39 Page No. 21



Section 32
T8N, R1E

Section 33
T8N, R1E

Section 5
T8N, R1E

Section 4
T8N, R1E

- A₁ - Sandstone with "X"
- A₂ - S 86° E 40.11' to offset corner (BenSo I-25) Sandstone with "●"
- B - S 65° E 1.35' to Survey Sign on 12" Pignut Hickory
- C - S 05° W 6.25' to MAG nail in 36" White Oak
- D - N 24° E 62.60' to MAG nail in 36" White Oak

Not To Scale
Compass Bearing Magnetic North



I, Kevin P. Enright, Monroe County Surveyor, hereby certify that this document was prepared under my direction in accordance with the provisions of Sections 26-2-12-11 of the Indiana Code; and the above data is given under my hand and seal this 18th day of May, 2007.

Kevin P. Enright



Administered by the Monroe County Surveyor Review Board

Date: 6-12-2007 DB